

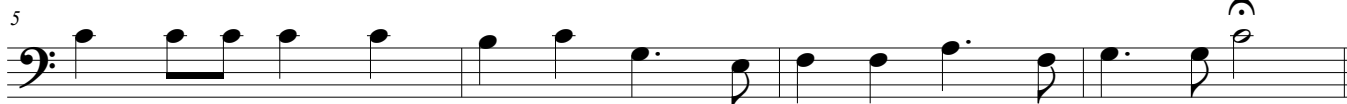
The Boar's Head Carol

Traditional
Queen's College, Oxford version

Unison MEN



1.The boar's head in hand bear I, Be-deck'd with bays and rose - ma-ry; and I



5 pray you my mas - ters, be mer - ry, *Quot es - tis in con - vi - vio: —*

SATB CHORUS

Musical notation for the SATB Chorus part, starting at measure 9. It features four staves (Soprano, Alto, Tenor, Bass) with chordal accompaniment. The lyrics are: *Ca - put a - pri de - fe - ro, Red - dens lau - des Do - mi - no!*

Unison MEN



13 2.The boar's head, as I un - der - stand, Is the rar - est dish in all this land, Which



18 thus be-deck'd with a gay gar - land, *Let us ser - vi - re can - ti - co:*

Repeat CHORUS



22 3.Our stew - ard hath pro - vi - ded this, In hon - our of the King of bliss, Which



27 on this day to be ser - ved is, *In Reg - gi - nen - si a - tri - o:*